

Stripe not as wide as eye diameter

Short snout

Origin of anal fin anterior to midpoint of dorsal fin

Bay Anchovy

- Forked tail
- Clear body
- Rounded, short snout, smaller lower jaw
- One dorsal fin
- Pectoral fin below stripe
- Silver stripe fades toward head



Silverside

- Two dorsal fins
- Silver stripe
- Pectoral fin located at stripe
- Small, pointed mouth



Silverside VS. Bay Anchovy

- Pointed mouth vs. Rounded mouth
- Distinct stripe vs. Faded stripe
- Pectoral fin near stripe vs. pectoral fin below stripe



Pinfish

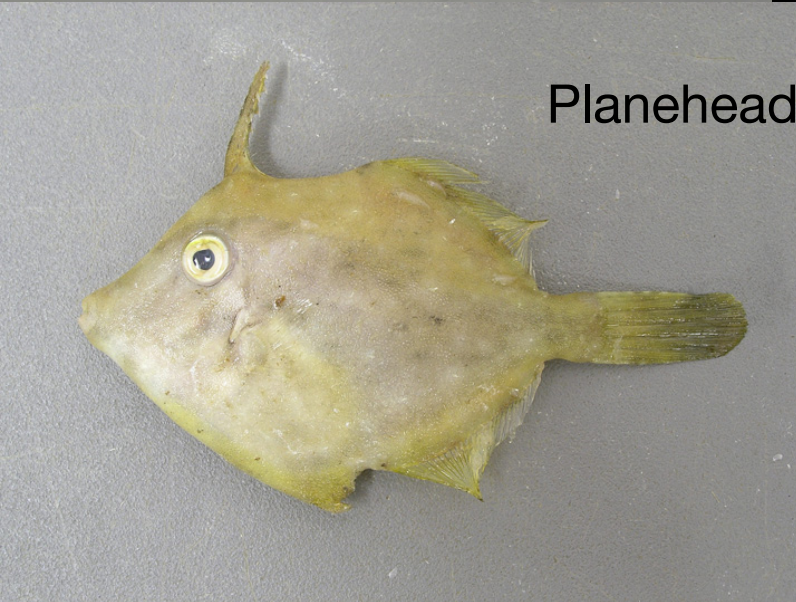
- Dorsal fin spines
- Vertical stripes
- Dusky bands
- Black spot behind eye, near gills, on older individuals
- Forked tail



Striped Burr Fish



Inflated Southern Puffer



Planehead Filefish



Snook

Collier Sea Grant



Red Drum



Sheepshead



Sheepshead Minnow



Sea Trout



Black Drum

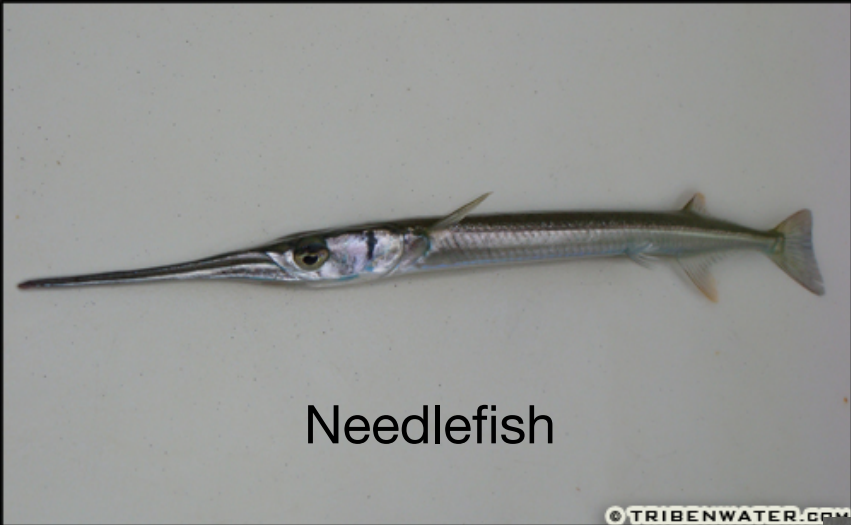


Dwarf Seahorse



Pipefish

© TRIBENWATER.COM



Needlefish

© TRIBENWATER.COM



Juvenile Permit



Juvenile Silver Perch



Atlantic Bumper



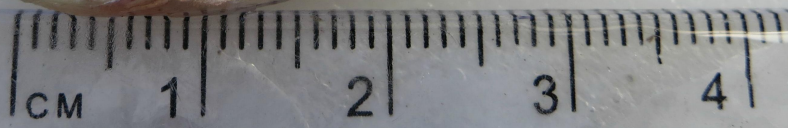
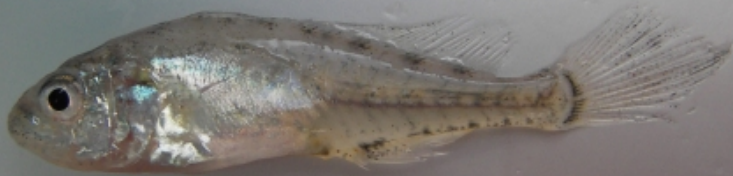
Black Mullet

© TRIBENWATER.COM



White Mullet

Croaker



Larval Spot



Juvenile Spot

juvenile spot



juvenile red drum



juvenile croaker





Silver Jenny



Spotfin Mojarra



Mojarra

- Silver Body
- Protruding mouth
- Forked tail
- Dorsal spines

silver jenny



Spotfin mojarra



Juvenile Flounder



Hogchocker



Juvenile Barracuda





Florida Blenny



Code Goby

Blenny vs. Goby

Continuous dorsal fin vs. two dorsal fins

Continuous anal fin vs. two cupping fins



Florida Hopper



Grass Shrimp



Brown Shrimp



White Shrimp



Spider Crab



Stone Crab



Blue Crab



Mud Crab



Horseshoe Crab



Comb Jelly



Lugworm Egg Sac



Red Mangrove

Glossy, pointed leaves
Prop roots
Closest to the water



Black Mangrove

Smaller, pointed leaves
Whitish back
Pneumatophores





White Mangrove

Not recorded

Rounded, oval leaves

Nectaries on petioles

Visible pores on leaves



Salt Marsh Cord Grass
Spartina alterniflora